

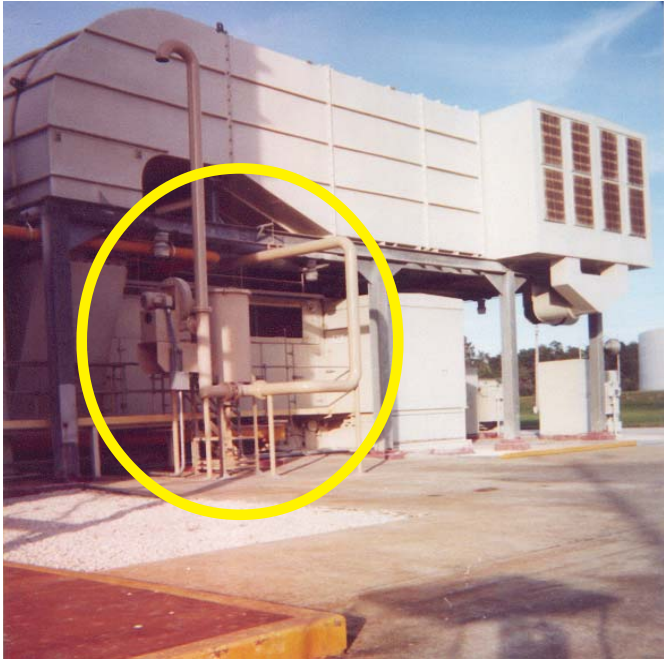


**Hilliard**  
HILCO<sup>®</sup> DIVISION<sup>™</sup>



# Mist Eliminator

# What is a Mist Eliminator?



The **HILCO** mist eliminator removes visible oil vapor from the air stream of vents in lubricating oil systems of large, high-speed rotating equipment such as **gas turbines, steam turbines, turbo compressors, turbo generators, reciprocating engines, high speed couplings and gear boxes**. The mist eliminator prevents oil mist from contaminating air or soil, helping facilities comply with environmental regulations. It also makes for a cleaner, safer work environment by eliminating oily residue build-up on engine room floors, enclosures and stairwells, while improving indoor/outdoor air quality and reducing fire hazards. The HILCO mist eliminator also saves money by returning oil to the sump that would normally be lost during the venting process, greatly reducing make-up costs. There are currently three versions available: **Blower Assisted, Mist Eliminator with Heat Exchanger, and a Coalescer-Only model**. All models eliminate oil mist with an efficiency of 99.97% removal of all airborne contaminant regardless of particle size.



## Blower-Assisted Mist Eliminator:

This model is designed for oil systems that cannot withstand back pressure or where back pressure may not be desirable. It can be installed with an airflow-restriction device to pull vacuum. It is also designed to maintain atmospheric condition in the oil system.

## Mist Eliminator with Heat Exchanger:

This model is often used where the oil can reach excessively high temperatures (200° F and above). By cooling the air stream, the oil mist becomes easier to coalesce and therefore more efficient.



## Coalescer-Only Mist Eliminator:

This model is appropriate for use where back pressure on an oil system is not a concern. It can be sized large enough to meet pressure-drop requirements. It also can be used where an existing blower is present to assist flow.

# Mist Eliminator Applications

## Gas & Steam Turbine Applications:

Rolls Royce / Allison  
Dresser-Rand  
GE Frame Engines  
GE Aeroderivative  
Solar Turbines  
Pratt & Whitney  
Mitsubishi  
Siemens Westinghouse

## Reciprocating Engine & Compressor Applications:

Caterpillar  
Cooper  
Dresser-Rand  
Ingersoll-Rand  
MAK  
Superior  
Waukesha  
White

# HILCO Replacement Cartridges

Allen, Baldwin,  
Bowser-Briggs,  
Commercial, Cuno,  
Fluitek, Kaydon,  
National Filtration,  
Nugent, Pall, Refilco,  
Velcon



## Competitor Replacement Elements

### Dollinger Element

### Hilco Element

95-276	DM 1724-00-C
95-155	DM 1212-00-C
95-154	DM 1222-00-C
95-255	DM 2136-00-CEP
95-137	DM 2136-00-C
95-151	DM 2122-00-C
95-121	DM-1228-00-C
95-117	DM 1110-00-C
3001786	DM 1120-00-C
95-115	DM 2124-00-C



HME-2

**The Hilliard Corporation**  
100 West Fourth Street  
Elmira, New York 14902

Phone: 607-733-7121  
Fax: 607-733-0928  
E-mail: [hilliard@hilliardcorp.com](mailto:hilliard@hilliardcorp.com)  
Web: [www.hilliardcorp.com](http://www.hilliardcorp.com)

QP-2.5M-01/06